

# Drytech Insulation Clip

**Drytech Insulation Clip for :**

- For Drywall Partition
- For Wall Panelling at Auditorium, Cinemas, Theaters etc.

To hold the Glasswool, Rockwool, Ceramicwool or any other Insulation in Position.

Nail Length	Insulation Thickness	Qty Per Cartoon	Model Code
¾"	½"	500 Nos	PEBAH22 - 10
1-¼"	1"	500 Nos	PEBAH22 - 32
1-¾"	1-½"	500 Nos	PEBAH22 - 45
2"	1-¾"	500 Nos	PEBAH22 - 51
2-½"	2"	500 Nos	PEBAH22 - 64

PEBAH 22 Perforated base hangers are available in Zinc plated (Golden Yellow Colour) 12 gauge nail from ¾" to 2-1/2" in Length. The base plate of Hanger is 2" x 2" of Galvanised Steel (28 Gauge) PEBAH22 are fixed to PLASTERBOARD with GI Staples. PEBAH22 hangers are packed in 500 Numbers in a cartoon with equal number of steel locking washers.

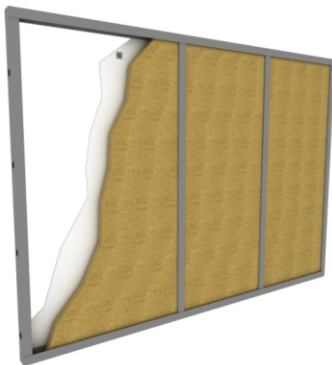
### APPLICATION METHOD



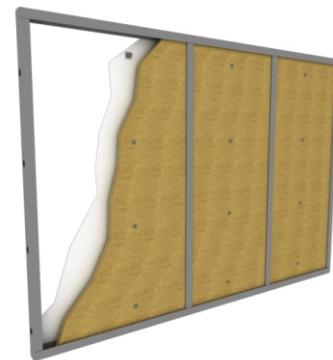
**STEP 1** - Plasterboard of the other side of the Framing.



**Step 2** - Installation of Drytech Insulation clip with the help of GI Staples as per Requirement



**STEP 3** - Installation Of Insulation by inserting it into the Pin provided.



**STEP 4** - Fixing of the Washer.