

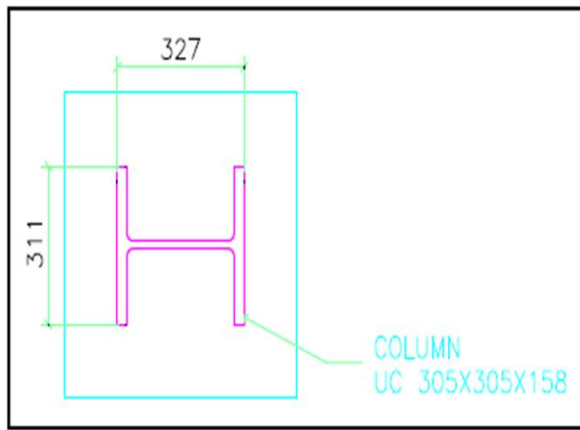


**innovative**

# 2 Hour Fire Rated Column Cladding



## Column type 2-2 hr fire rated column cladding with 3 layers of fire line boards



Providing & fixing 2 hr fire rating for built up column as mentioned above for 4 sides as per BS 476 ,1987 the system will be provided with Gyproc Fire line boards with reference to necessary HP / A ratio. The system should have necessary GI framing to hold 3 layers of boards in position on all 4 sides of the column. All boards joints to be finished with jointing compound & tape to give flush finish, all corners of the cladding system shall be provided with corner beads up to height of 3 mtr for protection & finished with jointing compound etc. complete. **The contractor should provide the required design calculation & generic certificate for industry standard for fire protection system.** The bottom of cladding with RCC floor shall have necessary backer rod & fire rated acrylic sealant.



Gyproc Fire line  
boards 3 number for  
column type -2





# Photos showing filling structure



GI framing  
required



**innovative**

# Photos showing Edge Protection



Corner beads to be fixed with special staples